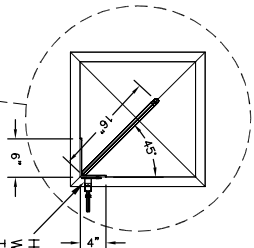
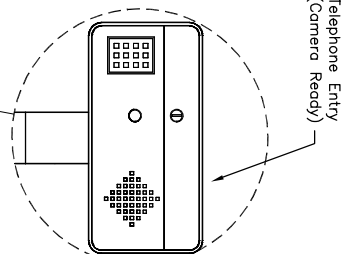


PHOTO CELL, (TP)  
ON BOTH PILLARS  
2-WIRE, THIS SIDE  
ONLY APPROX. 24" ABOVE GRADE

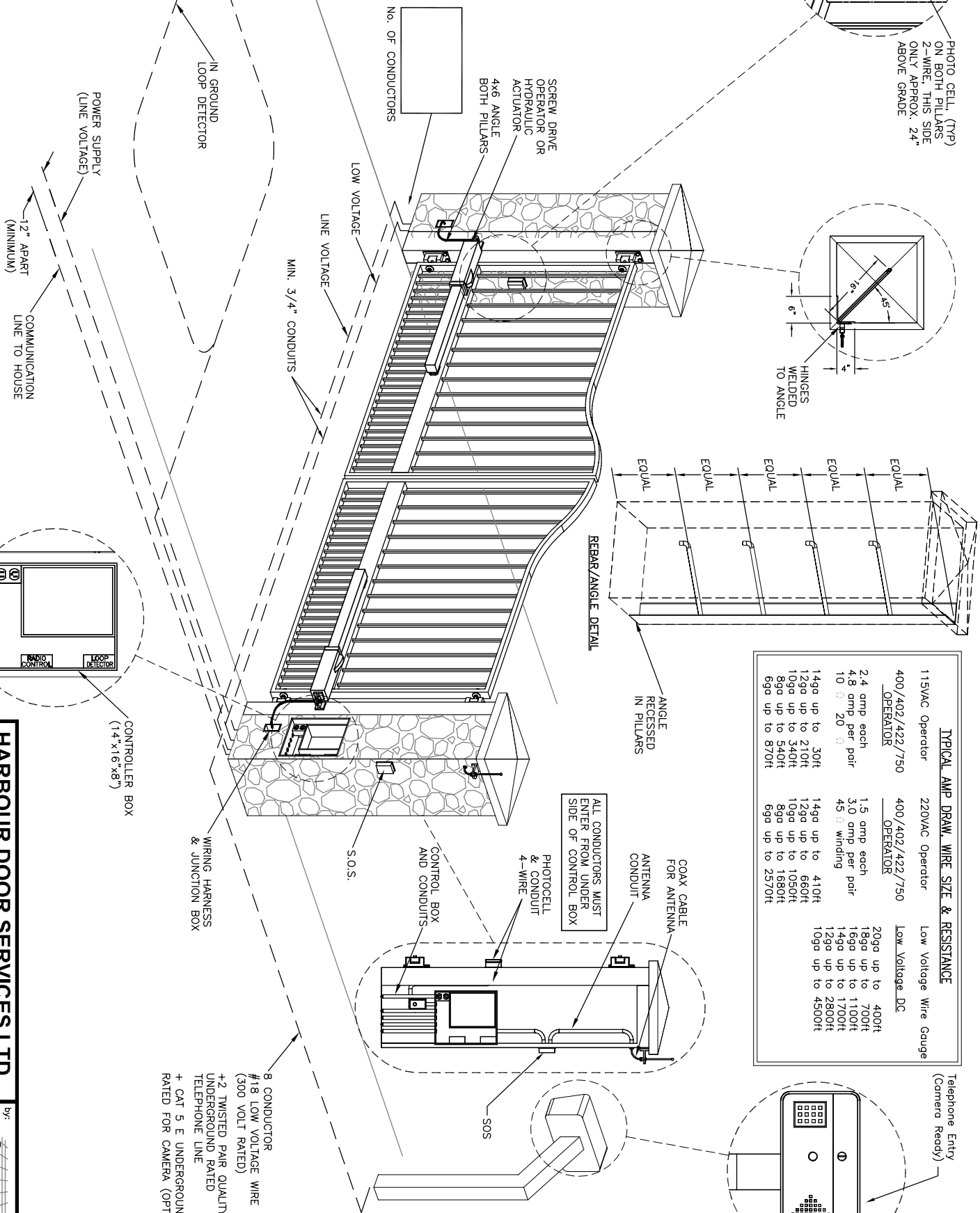


HINGES  
WELDED  
TO ANGLE

TYPICAL AMP DRAW, WIRE SIZE & RESISTANCE		
115VAC Operator	220VAC Operator	Low Voltage DC
400/402/422/750 OPERATOR	400/402/422/750 OPERATOR	Low Voltage DC
2.4 amp each	1.5 amp each	20ga up to 400ft
4.8 amp per pair	3.0 amp per pair	18ga up to 700ft
10 @ 20	45 @ winding	16ga up to 1100ft
14ga up to 30ft	14ga up to 410ft	14ga up to 1700ft
12ga up to 210ft	12ga up to 660ft	12ga up to 2800ft
10ga up to 340ft	10ga up to 1050ft	10ga up to 4500ft
8ga up to 540ft	8ga up to 1880ft	
6ga up to 870ft	6ga up to 2570ft	



Telephone Entry  
(Camera Ready)



**HARBOUR DOOR SERVICES LTD.**  
 210 Mary St., Victoria, BC V9A 3V9 Ph: (250) 383-1006 Fax (250) 383-2191  
 Email: harbourdoor@shaw.ca Website: www.harbourdoor.com

by: **COMPUTER**  
 (250) 361-8281

**Hydraulic Double Swing with Telephone Entry**